

# Solar Charge Regulator Steca PR 10A / 15A / 20A / 30A

Self explaining Graphical display of System Status  
Short circuit-, open circuit protection  
Automatic Electronic Fuse  
Internal Temperature Compensation  
Determination of State of Charge



Automatic Voltage Adaption  
Operating Status Diagnosis  
State of Charge Indication  
Overdischarge Protection  
Manual load switch

**Atonic**  
*inside*

CE

UL



Our newest, and fifth generation of solar charge regulators sets new standards in solar technology. For the first time a big graphical display shows all system information in a self explaining way. The integrated central processing unit, called Atonic, provides a charge controller with new functions. Atonic is more than a protective device for your battery, and contains the most recent and innovative technology. It contains a self-learning algorithm which gives detailed information on the battery's state of charge (SOC). This optimized Steca State of charge algorithm is more precise than ever known and displayed similar to a fuel gauge. It adjusts itself to the battery's age and capacity. The SOC provides a basis for all control and regulatory functions. This new type of hybrid regulator is much more efficient than conventional series and shunt regulators. Furthermore the regulator is equipped with an electronic fuse which protects the regulator much better than a mechanical fuse and offers more comfort to the user as it reconnects automatically. In addition a manual load switch is available on the regulator.

**Overcharge Protection:**

- Temperature-adjusted SOC and final voltage
- Optimised float, boost, equalisation charging
- The varied charging rate provide complete use of the battery capacity, and maximum life
- The controller adapts itself to 12V or 24V systems automatically on installation

**Options:**

- External temperature sensor
- Digital multifunction alarm output
- Prepayment Unit for prepay systems

**Overdischarge Protection:**

- The SOC provides load disconnect
- Warning of imminent load disconnect

**Display:**

Graphical self explaining LC-Display

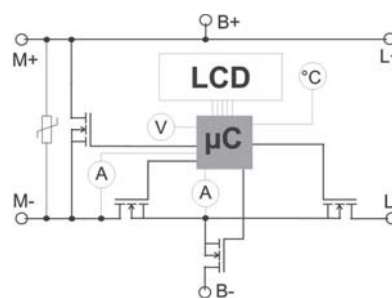
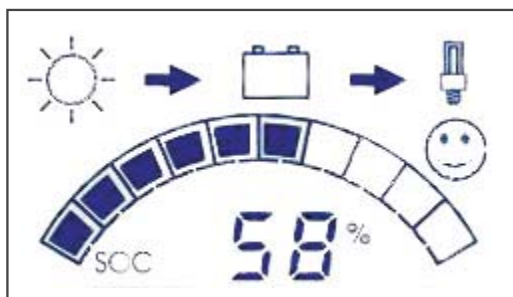
- SOC and Voltage of the Battery as well as all currents. All values are displayed as numbers and can be selected by the button.
- Operation status and detailed error report

**Safety Features:**

- Electronic fuse, protection against overcurrent, overvoltage and overtemperature
- Protection against wrong polarity and short circuit
- Extremely low electromagnetic emission

**Technical Data:**

With LCD	Steca PR1010	Steca PR1515	Steca PR2020	Steca PR3030
Max. Charge Current at 50° C	10 A	15 A	20 A	30 A
Max. Load Current at 50° C	10 A	15 A	20 A	30 A
Max. admissible current	110 %	110 %	110 %	110 %
Load overcurrent <small>disconnection after 1sec</small>	125 %	125 %	125 %	125 %
Max. self consumption	12 mA	12 mA	12 mA	12 mA
Admissible ambient Temperature	- 10 ° ... + 50 ° C	- 10 ° ... + 50 ° C	- 10 ° ... + 50 ° C	- 10 ° ... + 50 ° C
Connection Terminal (fine/single wire)	16/25 mm <sup>2</sup>	16/25 mm <sup>2</sup>	16/25 mm <sup>2</sup>	16/25 mm <sup>2</sup>
Weight	350 g	350 g	350 g	350 g
Dimensions	187x96x44 mm	187x96x44 mm	187x96x44 mm	187x96x44 mm
Protection	IP 22	IP 22	IP 22	IP 22
System Voltage	12/24 V	12/24 V	12/24 V	12/24 V



\*1) Athon was an Egyptian god called: "Master of the Sun"  
For a detailed description please see the AtonIC data sheet

Solarix, AtonIC, die LED-Farbanzeige und das Hybridsteuerungssystem G93 17 097.1 und G 93 17 338.5 sind beim deutschen Patent- und Markenamt eingetragen.

Präzisionselektronik  
Solarelektronik  
Batterie-Ladesysteme  
Kabeltechnik



Mammostraße 1  
87700 Memmingen  
Telefon: 0 83 31/85 58-0  
Telefax: 0 83 31/85 58-11  
E-Mail: info@steca.de  
Internet: http://www.steca.de